



RF500A GATEWAY SYSTEM MANUAL



RF500A Gateway System Manual

Contents

Check Packed Items.....	5
RF500A Gateway.....	5
RF500 Transmitters.....	5
RF500 Product Range.....	6
RF500 Gateway.....	6
RF500 Transmitters are available as follows:.....	6
RF512 Temperature Transmitter.....	6
RF512M Temperature Transmitter Backbone Option.....	6
RF513 Temperature and Humidity Transmitter.....	6
RF513M Temperature and Humidity Transmitter Backbone Option.....	6
RF515 Analog Input Transmitter and RF515A Connection Box.....	7
RF516 Precision Temperature Transmitter.....	7
RF542 Temperature Transmitter	7
Optional Accessories.....	7
Safety Information.....	8
Warning.....	8
WEEE.....	9
Powering On and Off.....	10
Switch On.....	10
Gateway Switch OFF.....	11
Gateway Reset	11
Transmitter Activation.....	12
RF500A-CONFIG - RF500A Configuration Utility.....	13
Requirements for RF500A-CONFIG.....	13
Installation of USB Drivers.....	13

Obtain Comark USB Drivers.....	13
USB Driver Installation Instructions.....	14
Installation of RF500A-CONFIG.....	15
Obtain RF500A-CONFIG Utility.....	15
RF500A-CONFIG Installation Instructions.....	15
Running RF500A-CONFIG for the First Time.....	16
Gateway Commissioning.....	17
Requirements for Commissioning.....	17
Setting of Gateway IP Address using RF500A-CONFIG.....	17
Viewing the Gateway Login Page.....	19
Setup of First Administrator.....	20
Gateway Language.....	20
Gateway Name.....	21
Gateway Clock Setup.....	21
Network Setup.....	22
Network Details.....	22
Gateway Programming and Use.....	23
RF500 System Components.....	24
Know your Gateway.....	24
RF500A Front Panel Indicators.....	24
Bottom Connections.....	25
Alarm Outputs.....	26
Side Switches and Indicators.....	26
Know your Transmitter.....	27
Transmitter Display.....	29
RF542 Network Transmitter - Detailed Operation.....	30
Connections to Network.....	30
RF542 Setup Procedure.....	31
Equipment Installation.....	33

Gateway Fixing.....	33
Transmitter Fixing.....	33
Mains Wiring.....	33
Ventilation.....	33
RF500 Wireless Monitoring System Overview.....	34
Gateway – Introduction.....	34
Overview of RF500 Mesh Networking.....	35
Meshing Transmitters and Backbone Transmitters.....	37
Automatic Data Retrieval (ADR).....	37
Gateway Specification – RF500A.....	38
Transmitters Specification.....	39
RF542 Network Specification.....	42
Changing Lithium Battery on RF500 Series Transmitters.....	43
Battery Reordering.....	43
Battery Change Procedure.....	44
Check for Transmitter Errors.....	45
Gateway Indication of Low Battery.....	45
Pinout and Wiring.....	46
Door Connector.....	46
Power Connector.....	46
Lumberg Connector.....	47
Gateway Relay Outputs.....	48
FCC Approvals.....	49
Equipment Ratings.....	50
Supply Voltage.....	50
Environmental Conditions.....	50
Gateway Storage/Operating Conditions.....	50
RF51X Transmitter Operating Conditions.....	50
RF542 Transmitter Operating Conditions.....	51

RF5XX Transmitter Storage Conditions.....	51
RF515 Maximum Input Conditions.....	51
Maintenance and Cleaning.....	52
Service and Repair.....	52
EC-Declaration of Conformity.....	53
Transmitter Fault Codes.....	54
Gateway Fault Conditions.....	55
Appendix A – Gateway Connection via RJ45 Cross-Over Ethernet Cable.....	56
Appendix B - Setting a Fixed IP Address.....	57
Definitions of Gateway Terminology.....	59
Glossary.....	62

Check Packed Items

Please confirm that the kit contents are all present and correct. If you believe any parts are missing or damaged please contact Comark or your local Distributor to arrange replacements.

Software and USB drivers are no longer provided on CD and can be downloaded free of charge from our website. See “RF500A-CONFIG - RF500A Configuration Utility” {Page 13} for instructions on how to download and install the software and drivers.

RF500A Gateway

The RF500A Gateway is available in two variants:

- RF500A Standard
- RF500AP Power over Ethernet enabled

The actual Gateway model is indicated on the side label by a check mark adjacent to the model code.

The RF500A and RF500AP Gateway Kits consist of the following items:

- RF500A Gateway Part No. RF500A or RF500AP
- Transmitter Activator Part No. RF525
- High Gain Antenna Part No. RF504
- AC Adaptor with Mains Lead with either UK, EU or US plug
- Ethernet Cable
- USB Cable (Required for configuration only)

RF500 Transmitters

RF512, RF513, RF515 & RF516 transmitters are packed with a mounting bracket and 2-tie-wraps.

RF542 transmitters are additionally packed with:

- 1x RF520 AC Adaptor including regional mains plug attachment
- 1x Cat5e Ethernet Cable
- 1x RF525 Transmitter Activator
- 1x RF542 Quick Reference Guide

RF500A	<input type="checkbox"/>	Comark Instruments, 52 Hurricane way, Norwich, Norfolk, NR6 6JB, UK Tel: 01603 (+44 1603) 256647 Email: service@comarkltd.com www.comarkltd.com
RF500AP	<input type="checkbox"/>	
<input type="radio"/>	ON / OFF	SERIAL No. <input type="text"/>
		STATUS — 1 — 2 — 3 — 4

RF500 Product Range

RF500 Gateway

The RF500 Gateway is available in two variants:

- RF500A Standard
- RF500AP Power over Ethernet enabled

RF500 Transmitters are available as follows:

RF512 Temperature Transmitter

- Integral temperature sensor plus connectors for two external temperature sensors and an external door sensor
- External temperature range: -40°C to $+125^{\circ}\text{C}$

RF512M Temperature Transmitter Backbone Option

- Integral temperature sensor plus connectors for two external temperature sensors and an external door sensor
- External temperature range: -40°C to $+125^{\circ}\text{C}$
- Includes High Gain Antenna and RF520 AC adaptor

RF513 Temperature and Humidity Transmitter

- Integral temperature sensor, one integral humidity sensor and connector for an external door sensor
- Integral temperature range: -30°C to $+70^{\circ}\text{C}$
- Humidity range: 10-90% RH

RF513M Temperature and Humidity Transmitter Backbone Option

- Integral temperature sensor, one integral humidity sensor and connector for an external door sensor
- Integral temperature range: -30°C to $+70^{\circ}\text{C}$
- Humidity range: 10-90% RH
- Includes High Gain Antenna and RF520 AC adaptor

RF515 Analog Input Transmitter and RF515A Connection Box

- Two analog input channels, each capable of configuration as 0-1V, 0-10V or 4-20mA using RF515A connection box

RF516 Precision Temperature Transmitter

- Integral temperature sensor, and connector for one external temperature Pt100 sensor and an external door sensor
- External temperature range: -200°C to $+400^{\circ}\text{C}$

RF542 Temperature Transmitter

- Connectors for two external temperature sensors and an external door sensor
- External temperature range: -40°C to $+125^{\circ}\text{C}$
- Includes RF520 AC adaptor

Optional Accessories

RF520	AC adaptor for RF512, RF513, RF516 and RF542
RF502	RF Bridge - 0.5m lead to enable transmission through RF resistant barriers
RF503	RF Bridge - 1.0m lead to enable transmission through RF resistant barriers
RF515A	2-Channel Terminal Box with 0.25m lead terminated with 6-Pin Lumberg Plug Includes two sets of 10R, 2K and 18K2 precision resistors
RF521	Door Sensor for hinged doors
RF522	Door Sensor for roller shutter type doors
RF525	Transmitter Activator
RFJACK	Alarm Output jack (2.5mm)
RFALARM	Alarm Output lead - 2m fig-8 wire terminated with 2.5mm jack

Safety Information

Under no circumstances may a user make any changes to the RF500A Gateway that would alter its performance. Any modification would void the CE compliance of the Gateway and may invalidate the warranty.

If the equipment is used in a manner not specified by Comark Instruments, then the protection provided by the equipment may be impaired.

No user serviceable parts are provided in RF500 Comark Wireless Monitoring Equipment. Contact Comark Instruments or your local distributor for all service requirements.

Warning



- Before connecting or disconnecting the antenna, ensure anti-static precautions are observed.
- Use only the FRIWO 12V AC adaptor; Type FW74010/12 as supplied with the RF500A Gateway.
- Do not modify the RF500A Gateway AC adaptor in any way.
- Use only the PHIHONG, PSM11R-050 5V AC adaptor or FRIWO type FW7662/05 with RF500 transmitters. It is supplied by Comark Instruments as three variants:
 - RF520 Transmitter AC adaptor with UK mains plug
 - RF520/EU Transmitter AC adaptor with European mains plug
 - RF520/US Transmitter AC adaptor with North American mains plug
 - RF520/AUS Transmitter AC adaptor with Australian mains plug
- Do not modify the AC adaptor in any way.
- RF500 transmitters contain a C-size lithium cell (AA-size for RF542). This cell must not be incinerated or subjected to temperatures in excess of 100°C. Do not deform, mutilate, crush, pierce, disassemble, recharge or short circuit. Such abuse can result in loss of seal, and/or cell explosion. Also exposure to humid conditions for long periods should be avoided.
- Do not insert metal objects into connectors.

- Ensure the antenna is securely connected before powering the equipment. Internal damage may result otherwise.
- The Gateway and Transmitters have been designed to operate with the antenna supplied by Comark, and having a maximum gain of 7dBi. Antennas not supplied by Comark Instruments or having a gain of greater than 7dBi are strictly prohibited for use with this device.

WEEE



RF512, RF513, RF515, RF516 and RF542 transmitters contain a non rechargeable lithium battery. This battery must be disposed of in accordance with local regulations.

Powering On and Off

Switch On



BEFORE SWITCHING ON, ENSURE THE ANTENNA HAS BEEN FITTED - IT IS ESSENTIAL TO AVOID DAMAGE.

1. Plug the Gateway AC adaptor into the socket on the underside of the Gateway, or for the PoE model (RF500AP) plug the Ethernet cable into a PoE enabled network socket. The Power/Battery indicator should show steady green.
2. Using a paper clip or similar object, press in and hold the ON / OFF switch on the side of the Gateway for 4 seconds. The Gateway will beep once and the blue ON* indicator will flash at a half-second interval. Gateway bootup will begin. On successful boot, the ON indicator will show solid blue.

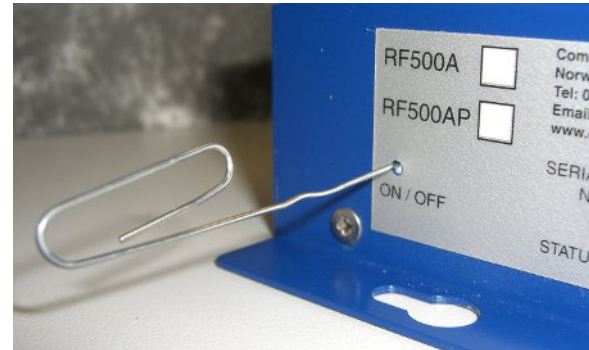


Figure 1 - Switch On using Paper Clip

* The ON indicator is shown in “Figure 6 - Front Panel Indicators” {Page 24}



The Gateway contains an internal backup battery, if this battery is not sufficiently charged; the Gateway will not switch on. Once external power is connected the internal battery will begin recharging. Whenever the charge state becomes sufficient the Gateway will automatically start as requested. Whilst in this mode Status LEDs 1, 2, 3 and 4 will flash in sequence. See “Figure 8 – Left Hand Side View of Gateway” {Page 26} for location of these LEDs.



It takes a few minutes for the Gateway to initialise; a sequence of 2 beeps followed by 4 beeps indicates successful initialisation.

Gateway Switch OFF

To turn the Gateway OFF navigate to the hardware page of the Gateway Web-View and use the [Shutdown Gateway](#) button, this will initiate the Gateway shut-down procedure.

If for some reason it is not possible to use the Gateway Web-View, then using a paper clip or similar object, press in and hold the ON / OFF switch on the side of the Gateway for 4 seconds. The Gateway will beep once and the ON indicator will flash at a 3 second interval to indicate shut-down. Once the shut-down sequence begins, the Gateway will beep 10 times in quick succession. The shut-down procedure could take up to 5 minutes to complete. After shut-down is complete the ON indicator extinguishes.

Gateway Reset

There are several circumstances under which the Gateway will perform a software reset, (for example performing Gateway Clock Setup). At start of the sequence the Gateway will beep 10 times in quick succession. The reset could take up to 5 minutes to complete which is indicated by a sequence of 2 beeps followed by 4 beeps to indicate successful initialisation. Unlike the shut-down described above, the ON indicator will remain steady during the reset sequence.

Transmitter Activation

RF500 transmitters are despatched in a disabled state to preserve the battery. To activate these, insert the RF525 Activator into the 3-pin socket marked B in “Figure 10 - Connector view of RF512, RF515, RF516 & RF542 Transmitter” {Page 28} until the display is enabled then remove the RF525.

On rare occasions RF542 Transmitters may show low battery on activation. This is due to a chemical process within the AA lithium cell called passivation, this is normal and the AA cell is not necessarily dead. Simply remove and replace the same battery by following the instructions in “Changing Lithium Battery on RF500 Series Transmitters” {Page 43}. The low battery indication should not re-appear.



Once activated, transmitters can only be de-activated by removing the battery.

RF500A-CONFIG - RF500A Configuration Utility

Each Gateway is shipped with a default **IP address** of 192.168.25.220. The Gateway IP address must be changed to the Static IP address provided by your IT department before connecting to the LAN.

Comark Instruments provides a Windows utility: RF500A-CONFIG to allow changing or viewing the Gateway IP address via the USB port.

Requirements for RF500A-CONFIG

- Windows XP, Windows XP 64-bit or Windows 7, Windows 7 64-bit
- Comark USB Drivers (The USB drivers must be installed prior to installing RF500A-CONFIG)
- Oracle (previously Sun) Java Runtime Environment 1.6.0 or later

Installation of USB Drivers

Obtain Comark USB Drivers

Comark USB Drivers can be downloaded from the following websites:

- <http://www.comarkinstruments.com/software.tpl> – UK and International
- <http://www.comarkusa.com/software.tpl> – USA, Canada and South America

Click the **Comark USB Driver.exe** link shown on web page above. Fill in the form and tick the box to confirm you have read the Software License Agreement. Proceed to download the file and choose the **save** option to start the download.

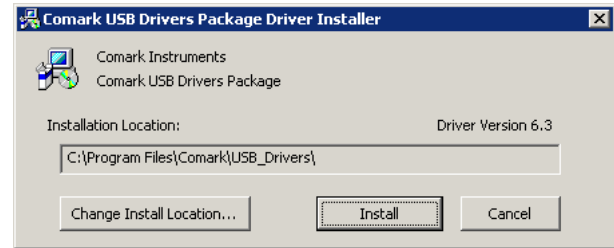
USB Driver Installation Instructions

When the download is complete; click the **run** button.

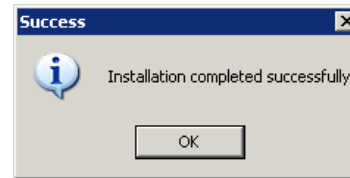
NOTE: Windows will ask if the user wants to allow this program to run, select **yes**.

Confirm you wish to install.

The screen opposite should be displayed - Click **Install**.



Once installation is complete you will see the screen opposite.



Please note your computer may request a restart after installation completes.

Installation of RF500A-CONFIG

Obtain RF500A-CONFIG Utility

Comark RF500A-CONFIG can be downloaded from the following websites:

- <http://www.comarkinstruments.com/software.tpl> – UK and International
- <http://www.comarkusa.com/software.tpl> – USA, Canada and South America

Click the **RF500A Config Util-1.00-Setup.exe** link shown on the web page above. Fill in the form and tick the box to confirm you have read the Software License Agreement. Proceed to download the file and choose the **save** option to start the download.

RF500A-CONFIG Installation Instructions

- When the download is complete, click the **run** button.
- NOTE: Windows may ask if the user wants to allow this program to run, select **yes**.
- Confirm “English” as the install language (there is no other choice available).
- In response to the question: *This will install RF500A-Config Util on your computer. Continue ?* Click **YES**.
- The following screen states: It is recommended that you close all that all other applications before continuing After closing these applications click the **Next** > button.
- When prompted to *Choose Destination Folder* accept the default of: *C:\Program Files\Comark\RF500A Config Util* by clicking the **Next** > button.
- When prompted to *Start Copying Files* click the **Next** > button.
- The installer will copy the files and confirm that it has *successfully installed RF500A Config Util*. Click the boxes to install your choice of short-cuts and click the **Finish** button.

Running RF500A-CONFIG for the First Time

RF500A-CONFIG will examine the Java environment and update it if necessary. Successful update is confirmed by the message opposite.

After clicking **OK**, RF500A-CONFIG will attempt to restart automatically but on some systems this may not occur. In this instance simply restart RF500A-CONFIG using the Start Menu or other installed short-cut.

RF500A-CONFIG is now properly installed and ready for use during Gateway Commissioning as follows:

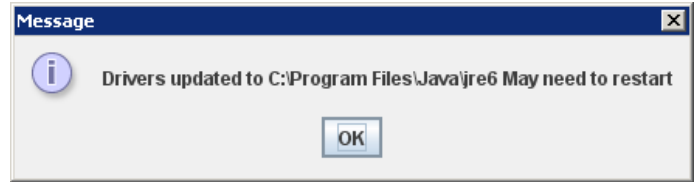


Figure 2 - Java Environment Update Successful

Gateway Commissioning

This section covers:

- Network configuration
- Setup of first Administrator
- Setting Gateway language
- Setting Gateway name
- Setting date and time

Requirements for Commissioning

- Computer with USB port and RJ45 Ethernet jack
- Comark RF500A-CONFIG Utility and USB cable
- Static IP address, Subnet mask and Default gateway (Usually allocated by IT Department)
- Email server name or IP address
- DNS server IP address (required if email server is named)

Setting of Gateway IP Address using RF500A-CONFIG

Each Gateway is shipped with a default IP address of 192.168.25.220. The first stage of commissioning is to complete basic network configuration. Comark provides a Windows utility: RF500A-CONFIG to perform this configuration.

To complete this section, you will need the following pieces of information from your IT department:

- Static IP address for the Gateway
- Subnet mask
- Default Gateway
- DNS Server *Not a requirement for this stage but may be needed for later configuration*

1. Connect the RF500A Gateway to the computer using the USB lead.
2. Switch on the RF500A. See “Powering On and Off” {Page 10} for instructions.

3. Start the RF500A-CONFIG Utility using the Windows Start Menu – The screen as shown in “Figure 3 - RF500A-CONFIG Screenshot” opposite, will be displayed:
4. Enter the Serial Number of the Gateway connected then click the **View Current Settings** button - Wait until the various fields are populated.
5. Enter the IP address, subnet mask and Default Gateway using dotted decimal notation into their respective fields.

Software Issue	For Comark Instruments use only
Comms Port	For Comark Instruments use only
Mac Address	Hardware address of the Ethernet interface
IP Address	The IP address allocated to the Gateway
Net mask	The subnet mask associated with the IP address
Default Gateway	The IP address of the network gateway to allow access from a different subnet

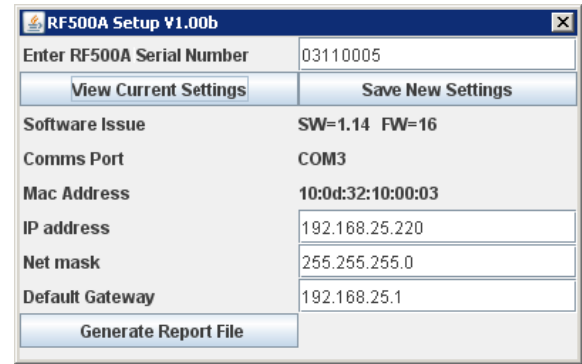


Figure 3 - RF500A-CONFIG Screenshot

6. Click the **Save New Settings button** - After successful transfer, RF500A-CONFIG will Reset the RF500A.
- The **Generate Report File** button is only for use under instruction from Comark Technical Support.

Viewing the Gateway Login Page

Ensure both the computer and Gateway each have an Ethernet cable connection to the LAN or are connected together via Ethernet cross-over cable.

Recall the IP address that was configured in “Setting of Gateway IP Address using RF500A-CONFIG” above.

1. Start the Web Browser on the computer.
2. Enter the IP address into the Address Bar as displayed opposite.
3. Press “Enter” key or click “Go”.
4. The Gateway login screen as in Figure 5 below will be displayed.

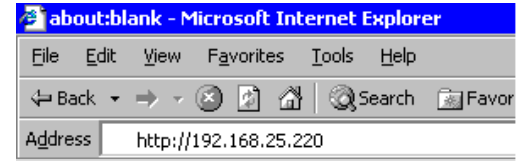


Figure 4 - Browser Address Bar



Figure 5 - Gateway Login Screen

Setup of First Administrator

As shipped, the Gateway has no users configured except for a special “one-time-use” installation user which enables an installer to add the main Administrator to the Gateway. Thereafter this Administrator’s username is used to perform all subsequent commissioning.

1. At the Gateway user login screen, type the username “comark” and click **Enter**.
2. At the password screen enter “42” and click **Enter**.
3. You will be logged into the Gateway as the installation user.
4. The Gateway will inform you that “You are about to commission a new system”.
5. Click on the **Enter Administrator Details** button.
6. When the Add 1st Administrator screen appears, fill in the fields with the username and password of your choice.
7. In the top left box, marked “Password Required”, enter the installation password: ”42” and then click the **Submit** button.
8. If successful the Gateway will return the message “New user added”.
9. Click the **OK** button to return to the Gateway user login screen.
10. Login as the new Administrator you just created.

Gateway Language

The language the Gateway uses in web pages and in emails can be changed as follows:

1. Click the **Administration** button then the **Language** button.
2. Click the radio button below the flag corresponding with your choice of language. Enter your password and click the **Submit** button.

The language selected is used immediately for all web pages and emails generated for all users.

Gateway Name



A Gateway name is required for email operation.

The Gateway Name is any name you choose, subject to the limit of up to 16 alphanumeric characters only. It will be used in the “From:” field in email and SMS notifications. This is important if you have more than one Gateway in your wireless system and all should be unique.

1. Click the **Administration** button then the **Gateway Name** button.
2. Enter the new Gateway Name into the entry field.
3. Enter your password then click the **Submit** button.

Gateway Clock Setup

1. Click the **Administration** button then the **Set Clock** button.
2. Enter the current date and time using a 4-digit year.
3. Enter your password and click the **Submit** button.

The Gateway will automatically reset after this step.

Network Setup

The Network Settings page has many fields but at this stage for a basic LAN connectivity test, only the Network Details section is required.

This section assumes a network connection via LAN and the **IP address** configured using RF500A-CONFIG as opposed to using a cross-over cable and the RF500A default IP address of 192.168.25.220.

Click the **Administration** button then the **Setup Network** button to show the Network Details page.

Network Details

Your IT Department usually provides the following information in order to set up your Gateway for Network Access:

- *Static IP Address*
- *Subnet Mask*
- *Default Gateway*
- *DNS Server*

Enter these using dotted decimal notation into their respective fields. If access from different subnets is required also enter the Network gateway IP address. Users who implement MAC address access security will find the MAC address of the LAN interface displayed in this screen.

<i>Static IP Address</i>	The IP address which has been allocated to the Gateway. E.g. 192.168.25.217
<i>Net mask</i>	The subnet mask associated with the above IP address. E.g. 255.255.255.0
<i>Default Gateway</i>	The IP address of the network gateway to allow access by users on a different subnet
<i>DNS No</i>	The IP address of your LAN Name Server

1. Double-check the *Static IP Address* entered because any entry mistake here can cause problems connecting after settings are saved.
2. To save changes, enter your password and click the **Save** button. The Gateway may automatically reset after this step.
3. Wait until the Gateway has successfully reset. See “Gateway Reset” {Page 11} for details.
4. Verify that a connection can be made to the Gateway by following the steps in “Viewing the Gateway Login Page” {Page 19}.

Gateway Programming and Use

This, the RF500A System Manual covers installation and commissioning of the RF500 Wireless Monitoring system from a hardware point of view.

A Web-View Help Guide for the RF500 Wireless Monitoring System is available online via the Gateway itself. This is a detailed manual incorporating help and detailed information on use of the Gateway and transmitters, including all the available pages.

Using the Web-View manual as a guide the remainder of the RF500 Gateway configuration can be performed. This includes:

- Email Setup
- Email Account
- Adding Transmitters
- Create a Backup

RF500 System Components

Know your Gateway

RF500A Front Panel Indicators



Figure 6 - Front Panel Indicators

There are four LEDs on the front of the Gateway:

ON	<i>Steady Blue</i> <i>Flashing at 1/2s rate</i> <i>Flashing at 3s rate</i>	The Gateway is running Gateway is starting up Gateway is shutting down
POWER / BATTERY	<i>Steady Green</i> <i>Flashing Green</i> <i>Off</i>	External power is available Gateway is on and running off the battery pack Gateway is off and external power is not available
FAULT	<i>Flashing Yellow</i>	Contact technical support from your local distributor or Comark Instruments. The Home Page may provide more information on possible faults
ALARM	<i>Flashing Red</i>	An enabled alarm event has occurred

Bottom Connections

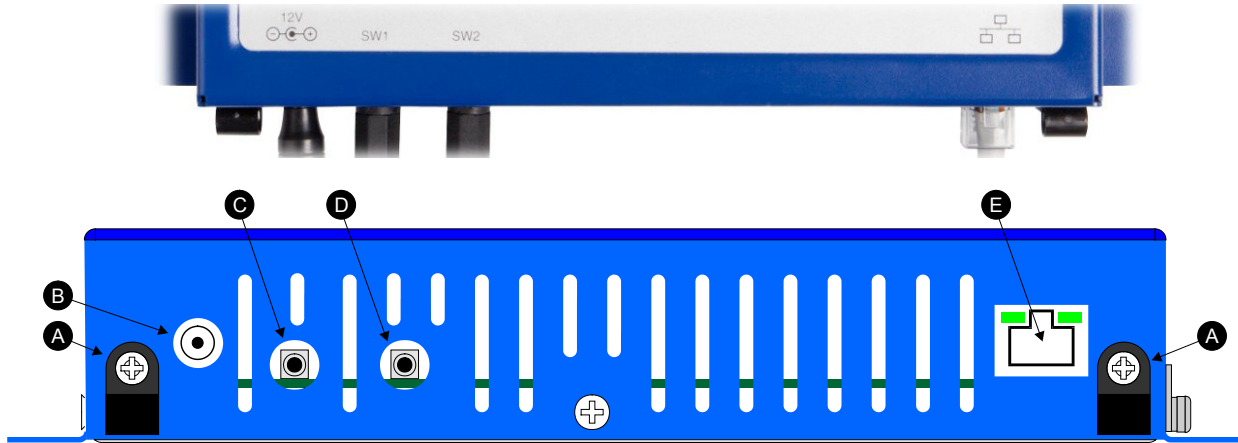


Figure 7 - Bottom View of RF500A Gateway

- A. Cable clamps
- B. 12 VDC input
- C. SW1 – Jack Socket for Relay Output 1
- D. SW2 – Jack Socket for Relay Output 2
- E. RJ45 Ethernet LAN Socket

Alarm Outputs

SW1 & SW2 are two switched outputs provided for connection to customer alarm indicators, via relay contacts with **24Vdc 500mA** rating, configurable for either NO (Normally Open) or NC (Normally Closed). These are marked as SW1 and SW2, and are in the form of 2.5mm Jack Sockets. Plugs to fit these sockets can be ordered from Comark Instruments using part number: RFJACK.



With the Gateway switched OFF the relays are in a Normally Open condition, this may cause any equipment connected to the contacts to energise.

Side Switches and Indicators

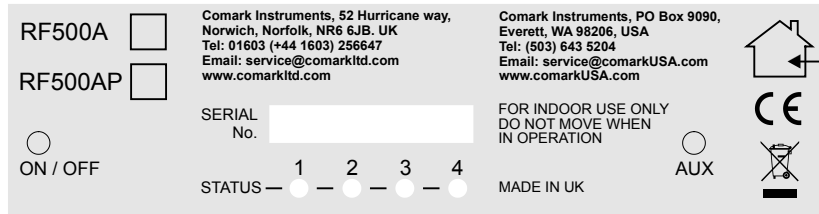


Figure 8 – Left Hand Side View of Gateway

ON / OFF
STATUS
AUX

Gateway Startup/Powerdown switch
Diagnostic LEDs for technical support use
Reserved Switch

Know your Transmitter

- A. Alarm LED. Flashes red to indicate any one channel in alarm
- B. Active LED. Flashes green to indicate external power detected
- C. Infra-Red interface. For Comark use only
- D. Antenna. (Do not remove whilst in operation)
- E. Lashing eye - Four available
- F. Internal temperature sensor

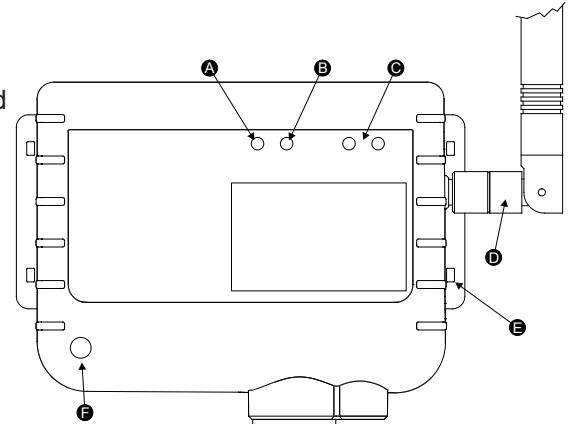


Figure 9 - Front view of RF512 Series Transmitter

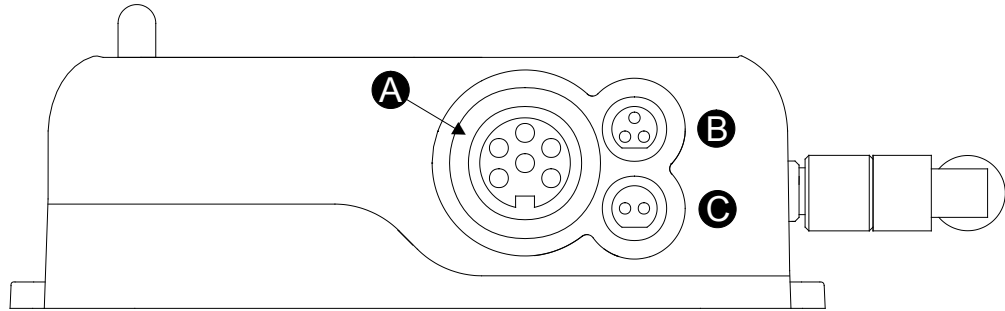


Figure 10 - Connector view of RF512, RF515, RF516 & RF542 Transmitter

- A. Lumberg Socket for Probe
- B. Socket for Door & RF525 Activator (Dual function)
- C. External DC adaptor socket

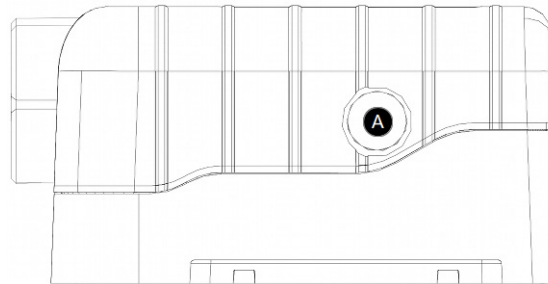


Figure 11 - Ethernet Link Indication Window (RF542 Only)

- A. Ethernet link indication (once a link is detected the green indicator will be illuminated)

Transmitter Display

RF500 transmitters all have a liquid crystal display as shown below. Only RF512 is capable of using all three display areas and annunciators.



Indicates that the door channel reads open.



Indicates that the internal lithium battery requires replacement.



Indicates an unacknowledged alarm on any channel.



When steady, indicates that the transmitter has logged onto the Gateway.

When flashing, indicates the transmitter is currently attempting transmission with the Gateway.



Indicates that the sensor or probe is broken.



Indicates that the number to be displayed is too big to fit on the LCD. E.g. 2000 cannot be shown on a “1999” digit area.

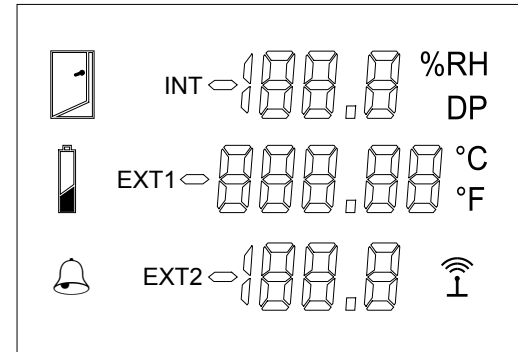


Figure 12 - Transmitter Display

RF542 Network Transmitter - Detailed Operation

The RF542 Network Transmitter is a two external channel temperature monitor. Communication to the RF500 Gateway does not use RF but an Ethernet LAN connection is used instead. It allows temperature monitoring in locations which are out of radio range of the Gateway.



The RF542 will only transmit data to its associated Gateway when connected to external power via the RF520 AC adaptor. If external power is removed, transmitter temperature monitoring and logging will continue. Once external power is restored, data record transmission to the Gateway will resume.



Whilst external power is connected, the transmitter will become noticeably warm to the touch. This is normal and expected behaviour.



Figure 13 - RF542 RJ45 Network Port

Connections to Network

This device supports fixed speed 100Mbps, half duplex. It has a DHCP client so the IP address will be assigned by the network; there is no facility to set a static IP address.

RF542 Setup Procedure

1. Plug RF542 into network.
2. Plug the RF520 into the mains and into the RF542.
3. Plug in the RF525, the LCD will first display the current IP address of the RF542 which needs to be noted down for the next step. In the example in Figure 14 below the IP address would be 192.168.25.188. If the RF542 IP address is 0.0.0.0 this means the network has not issued an IP address yet, remove the RF525 and try again. If you missed some of the sequence, remove the RF525 and try again.

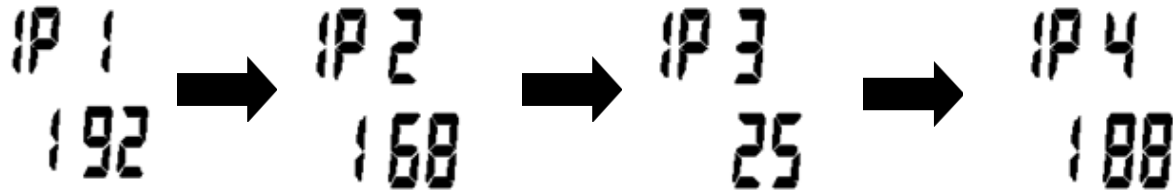


Figure 14 - Display of RF542 IP Address

4. Once the set of four numbers for the IP address has been displayed the LCD will finally show SETUP as shown below:

SETUP



Figure 15 - RF542 in Setup Mode

- Using the PC and a suitable Web Browser (use Firefox, Chrome or Internet Explorer), enter the IP address as noted down from step 3 into the address bar and the page opposite will be displayed:
- In the text box above the buttons type in the IP address or URL of the RF500A that will store the data for this transmitter.
- Click the Enter button and the confirmation screen opposite will be displayed:
- Setup is now complete. Remove the RF525, the transmitter will now revert to normal operation ready to be added to the Gateway for tasking.

RF542 Setup Page
Serial No: CN11070474
Mac Address: 00-07-3C-1D-0C-01
Link Speed: 100
Current Gateway Address:
192.168.25.92
Enter RF500A Gateway Address

Enter Cancel

Figure 16 - RF542 Setup Page

- Click the **Enter** button and the confirmation screen opposite will be displayed:
- Setup is now complete. Remove the RF525, the transmitter will now revert to normal operation ready to be added to the Gateway for tasking.

Serial No: CN11070474
Mac Address: 00-07-3C-1D-0C-01
Link Speed: 100
Current Gateway Address: 192.168.25.92
Enter RF500A Gateway Address

Figure 17 - RF542 Setup Page Confirmation Page

Equipment Installation

Comark Instruments strongly recommend that RF500 System installation is carried out by a Comark Installation Engineer or by a Comark Authorised Distributor or Agent.

Gateway Fixing

Mounting of the Gateway is possible using the keyhole screw fixings provided on the rear of the Gateway itself. However the fixings used are to be determined by the installation engineer depending on the type of material used in the construction of the area where the Gateway is to be placed. To avoid accidental disconnection, the DC power cable and cables connecting to the Relay Outputs should be secured using the cable clamps provided on the Gateway case. See “Figure 7 - Bottom View of RF500A Gateway” {Page 25}.

Positioning of the Gateway should be in such a way as to limit the risk of liquid being spilt on it as damage may result.

Transmitter Fixing

Mounting of the transmitters is possible using the mounting bracket provided. The bracket is fixed using 2 screws and the transmitter then slides into the bracket from the top. With each transmitter, Comark Instruments provide two cable ties which, once the transmitter is slid into the bracket, can be fed through the slots in both bracket and transmitter case to retain it. The door and DC power cables should be tie-wrapped to the bracket to avoid accidental disconnection.

Mains Wiring

Connections to mains supply for the Gateway and powered transmitters is via the AC mains adaptors supplied and a locally installed socket. Any power requirements for the hardware will be determined during survey and should be installed by qualified electrician and certified as safe to use before installation can be started.

Ventilation

At no time should the ventilation slots on the Gateway be covered or obstructed. At least 100mm of free space must be provided above and below the Gateway to ensure that sufficient airflow is maintained through the case to provide adequate cooling. Failure to do this may result in damage to the Gateway due to overheating and invalidation of the warranty.

RF500 Wireless Monitoring System Overview

Gateway – Introduction

The RF500A Gateway is an embedded microprocessor device containing a radio module for RF communications to the monitoring transmitters. The radio module uses a licence free band in the 2.4GHz spectrum. Comark Instruments RF500 uses proprietary protocols over a standard IEEE 802.15.4 link. These protocols achieve reliable communication between the transmitters and the Gateway via self-healing mesh radio networks.

Data from measurements taken by the transmitters is stored on the RF500A Gateway in contrast to other systems which store their data on a PC using special software. For operating the RF500 system the only software required is a Web Browser such as Internet Explorer or Firefox. There is no requirement to install software on each user's computer.

The Gateway contains sufficient data storage capacity for up to 10 years which can be automatically backed up to external storage using the built in shared drive backup method, or by manual request to generate and download a backup file via your web browser.

An external power adaptor provides the mains power for the Gateway. An internal Nickel-Metal-Hydride (Ni Mh) rechargeable battery is included, this provides normal operation of the Gateway during power failure until the battery is exhausted; the Gateway then shuts down until power is restored.

Two relay connectors are provided for external alarms, Autodiallers/Klaxons etc. All other connections to the Gateway are disabled. See "Figure 7 - Bottom View of RF500A Gateway" {Page 25} for further details.

Emails for alarms will be instigated directly from the Gateway. It is also possible to send a text message alarm via email using a third party provider.

The Gateway can be either desk mounted or wall mounted. Wall mount keyhole slots are provided on the case. The external long range Antenna has variable orientation to suit vertical or horizontal mounting.

Four LEDs on the Gateway display the current status of the system – ON, Power/Battery, Alarm indication, and Fault indication.

Overview of RF500 Mesh Networking

The RF500 Wireless Monitoring System uses the IEEE 802.15.4 radio transmission standard to implement a radio mesh network.

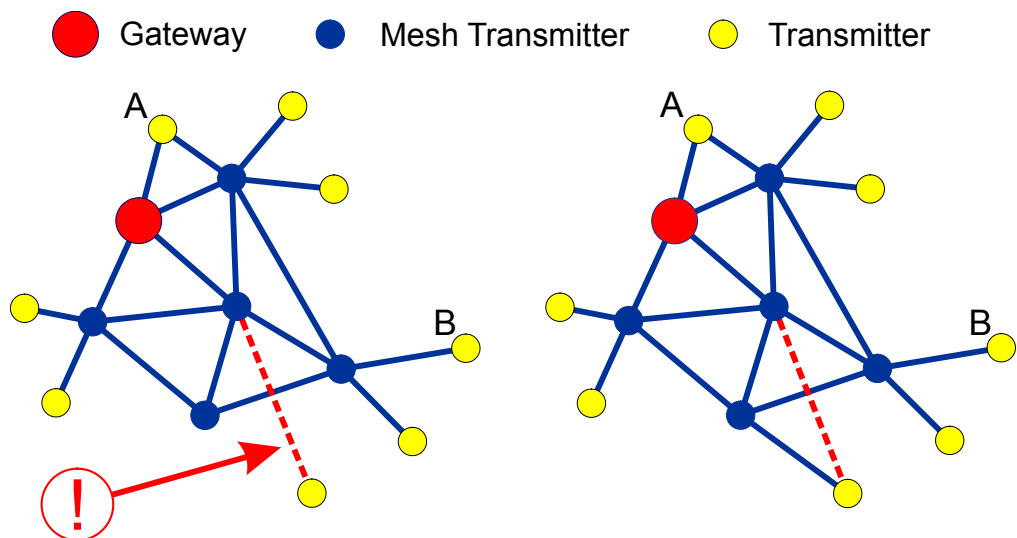
A mesh network is comprised of the following devices:

- Gateway
- Mesh Transmitter
- Transmitter

On installation each transmitter is associated with a particular Gateway by serial number. Messages are transferred between transmitters and the Gateway using two-way communication with acknowledgement of successful message reception.

Transmitters which are physically close to their associated Gateway such as transmitter A in Figure 18 below will most likely transmit directly to it. Others such as transmitter B which are further away rely on meshing transmitters to forward messages to and from the Gateway on their behalf.

The route taken by the message can vary depending on network load and link reliability. The ability to dynamically reconfigure the network is termed self-healing. In the figure below the self-healing ability is shown.



Data transfer interrupted
transmitter continues to
store data.

Transmitter reroutes to
self-heal network and
transfers stored data.

Figure 18 - A Typical Mesh Network

Meshing Transmitters and Backbone Transmitters

Whenever a RF512, RF513 or RF516 transmitter is powered by a RF520 AC adaptor it will become a Meshing transmitter and will form part of the radio mesh network, intelligently forwarding messages on behalf of other transmitters. However if external power is removed it will revert back to a regular transmitter.

In “Figure 18 - A Typical Mesh Network” above , regular Transmitter B is supported by its nearest Mesh Transmitter (coloured blue/dark) which in turn is supported by other Mesh Transmitters. If external power failed on one of those Mesh Transmitters; Transmitter B would not have a route back to the Gateway, effectively isolating it from the radio network. To prevent missed alerts from transmitters such as B it is recommended to set those Mesh Transmitters it depends on for its radio route to the Gateway as Backbone Transmitters.

RF512, RF513 and RF516 have the option to become “Network Backbone” transmitters, this option can be enabled using a setup option in the Gateway. Backbone transmitters will form part of the mesh network continuously even when not powered by a RF520. Due to the very large drain on the internal battery, Backbone transmitters must be powered using a RF520 mains adaptor. The internal battery is considered only as a backup battery for Backbone transmitters.

Automatic Data Retrieval (ADR)

The fact that transmissions between transmitters and the RF500 Gateway are acknowledged ensures that the transmitters know exactly which data records have been successfully transferred to the Gateway and those which must be re-transmitted. Therefore if the Gateway is temporarily unable to receive or transmit messages for whatever reason, data will not be lost during this period. When the Gateway is again able to receive and transmit properly the transmitters will re-transmit those records which were unable to be transmitted during the period of outage.

This re-transmission of data happens automatically without user intervention and results in seamless graphical and tabular data with no gaps.

Gateway Specification – RF500A

No of Channels	Up to 256
No of Transmitters	Up to 64
Storage Capacity	Up to 10 years worth of data
RF Frequency	2.4GHz using IEEE 802.15.4
Operating Conditions	0°C to +40°C (+32°F to +104°F) 10-90% RH non-condensing
Power Sources	AC power adaptor, rechargeable Ni-Mh battery RF500AP only: Power over Ethernet (PoE) capability. Compliant to IEEE 802.3af
Power Adaptor	100-240VAC 1.5A 50/60Hz
Battery Backup	4.3Ah Ni-Mh Rechargeable Battery. Running time approximately 1 hour
Clock Accuracy	4ppm (2 minutes per year)
Relay Outputs (SW1 & SW2)	Two individual 2.5mm jack sockets. Contacts: 24Vdc 500mA maximum
Maximum Relay Output Lead Length	Not to exceed 30m
Power Consumption	12W typical
Dimensions	L 225mm x W 150mm x D 40mm
Weight	1.3kg

Transmitters Specification

Temperature Measurement Range Integral Thermistor Sensor - RF512, RF516 Integral Thermistor Sensor - RF513 External Sensor - RF512, RF542 External Pt100 Sensor - RF516	-30°C to +70°C / -22°F to +158°F -30°C to +70°C / -22°F to +158°F -40°C to +125°C / -40°F to +257°F -200°C to +400°C / -328°F to +752°F
Humidity Measurement Range (RF513)	10 to 90% RH
Analog Input Measurement Range (RF515)	0-1V, 0-10V, 4-20mA
System Accuracy Temperature with Standard Sensors Internal Thermistor – 0°C to +70°C / -32°F to +158°F External Thermistor – -20°C to +70°C / -4°F to +158°F Thermistor – full range Pt100 – full range between two points	±0.5°C / ±1°F ±0.5°C / ±1°F ±1°C / ±2°F ±0.1°C / ±0.2°F
Humidity 10-90% RH	±3%
System Accuracy - Analog Input (23°C) / (73°F)	0.3% of reading

Resolution Temperature Thermistor Pt100	0.1°C / 0.1°F 0.015°C / 0.03°F
Door Sensor	7.5 seconds
Humidity 10 to 90% RH	±0.1%
Analog Input 0-1V 0-10V 4-20mA	0.1mV 1mV 1µA
Maximum Probe Lead Length (Except RF516)	Not to exceed 30m
Maximum Probe Lead Length (RF516)	Not to exceed 3m
Pt100 Connection Type	4-Wire
Pt100 Sensor Drive Current	400µA Nominal
Operating Temperature Range (RF542)	0°C to +50°C (32°F to 122°F) 10-90%rh - Non-Condensing
Storage Temperature	-40°C to +85°C (-40°F to +185°F)
RF Frequency	2.4GHz using IEEE 802.15.4
Standard Antenna High-Gain Antenna (optional)	External, removable, Omni directional with pivot. Length: 90mm from pivot Length: 235mm from pivot
Radio Range*	*Typically 50 metres indoors

Clock Accuracy**	20ppm (1 minute/month) at 25°C (77°F)
Logging Memory	32000 records
Logging Frequency	Programmable between 1 minute and 60 minutes
Monitoring Frequency	1 minute
Indicator LEDs	Red – Warning Green – External Power (Not RF515) Green - LAN Connection (RF542 only)
Case Material	Over moulded food safe clear polycarbonate with BioCote® antimicrobial
Battery Type	Replaceable Lithium ‘C’ Cell Saft LSH14 LIGHT Saft LS26500 (Restricted for transport) Replaceable Lithium ‘AA’ Cell (RF542 only)
Battery Life***	Up to 3 years
Dimensions	L 134mm x W 83mm x D 34mm L107mm x W 83mm x D 40mm (RF542)
Weight	270g 215g (RF542)
Mains PSU	Optional Mains PSU Part No RF520 100-240VAC 0.3A 50/60Hz

* Internal RF range cannot be guaranteed as it varies from building to building. Requirement for all hardware is always determined on site by a physical site survey.

** Transmitters will synchronise their clocks with the Gateway at midnight.

*** When used at 23°C (73°F) room temperature and Radio Rate of 15 minutes.

RF542 Network Specification

Ethernet Connectivity	Fixed 100Mbps - Half Duplex - RJ45 Jack
IP Address Configuration	DHCP Only
Link Status Indication	Green LED for Link Established

Changing Lithium Battery on RF500 Series Transmitters

Battery Reordering

RF512, RF513, RF515 & RF516 transmitters are fitted as standard with a high power 3.6V Primary lithium-thionyl chloride C-size cell. Manufacturers part number **Saft LSH14 LIGHT** or **Saft LS26500**.

The **Saft LS26500** battery can only be used in transmitters manufactured after April-2009. The date-of-manufacture is encoded in the serial number. The serial number has the format MMYxxxx where MM represents the 2-digit month and YY represents the 2-digit year in which the transmitter was manufactured.

Comark recommend that only the **Saft LSH14 LIGHT** be used in powered transmitters. The **Saft LS26500** battery can suffer from short lifetime when installed in powered transmitters.

Only use **Saft LSH14 LIGHT** or **Saft LS26500** as replacements. Use Comark part number: 'RFBATT' to order a replacement battery.

RF542 transmitters use a 3.6V AA lithium thionyl chloride battery; this can be replaced by any brand of 3.6V AA lithium battery.

Battery Change Procedure

The transmitter latches any low battery condition and must be powered off fully for it to clear. Waiting for the display to go blank ensures that the low battery status is cleared.

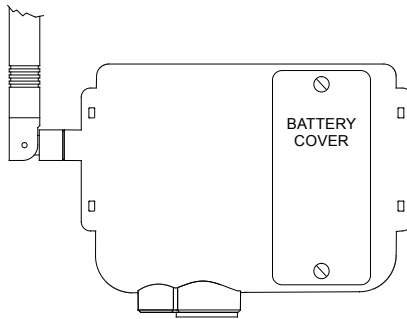


Figure 19 - Battery Cover

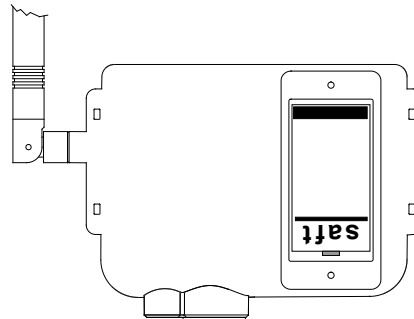


Figure 20 - C-Size Cell Fitment

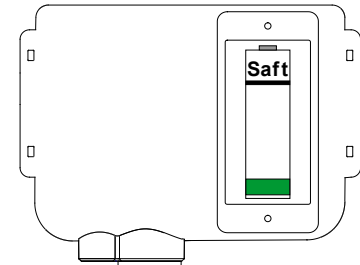


Figure 21 - AA-Size Cell Fitment

1. Disconnect all plugs from the transmitter and remove it from its mounting bracket by sliding it upwards.
2. Using a Philips No 0 or flat-blade screwdriver undo the two retaining screws and remove the battery cover.
3. Remove the exhausted battery and wait a few seconds for the display to blank.
4. Replace with a fresh one ensuring the polarity is correct and taking care to snap the new battery in cleanly without making and breaking the contacts repeatedly.
5. Replace the battery cover and do up the two screws taking care not to overtighten them.
6. Observe any local restrictions on disposal of the used cell.

Check for Transmitter Errors

The removal of the battery will cause the internal clock on the transmitter to reset and so generate a Code-100 condition. This will be cleared automatically by the Gateway, see “Transmitter Fault Codes” {Page 54} for details. Verify that the transmitter display shows either “No Code”, “No Fault” or “Code-100” only.

Should a “Code-400” or “Code-500” occur after battery change on a previously working transmitter try removing and reinserting the battery, taking care to snap the new battery in cleanly without making and breaking the contacts repeatedly.

Gateway Indication of Low Battery

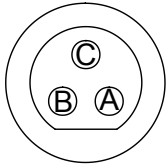
Once a transmitter shows “low battery” the radio is disabled, monitoring and data logging however will continue until the battery becomes completely exhausted. If a transmitter is left in a state of low battery for a long period, there may be many logged records awaiting transmission to the Gateway.

On changing the battery the transmitter logs a “battery good” record but due to Automatic Data Retrieval (ADR) {Page 37} this record is only transmitted to the Gateway after any previously logged temperature records have been transmitted. Therefore it may take several hours before the “battery good” record is received by the Gateway which in turn clears the indication of Low Battery for the transmitter.

Pinout and Wiring

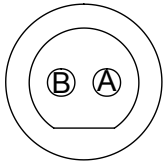
These connectors are drawn from the point of view of looking into the socket from outside the transmitter

Door Connector



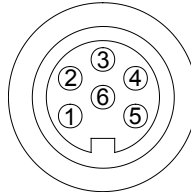
- A Door Positive
- B RF525 Activator Positive
- C Common Ground for Door and RF525

Power Connector



- A Positive +5 VDC
- B Negative Ground

Lumberg Connector



Pin No	RF512 Pinout	RF515 Pinout	RF516 Pinout
1	Thermistor External 2	External 2 Positive	Pt100 Positive Voltage Input
2	Thermistor External 1	External 1 Positive	Pt100 Positive Current Drive
3	Thermistor External 4 (Reserved for future use)	Reserved for future use Do Not Connect	No Connection
4	Thermistor Common	External Common	Pt100 Negative Current Drive
5	Thermistor External 3 (Reserved for future use)	Reserved for future use Do Not Connect	Pt100 Negative Voltage Input
6	No Connection	No Connection	No Connection

Gateway Relay Outputs

The two relay outputs each accept a 2.5mm jack plug. These are individually controlled SPST relay contacts. Comark can supply jack plugs for wiring external equipment to be activated by the Gateway.

The maximum lead length for the relay outputs is 30m.



Ensure that any external equipment presents only a low voltage on the jack so as to prevent any chance of personal injury due to electric shock should the jack plug become disconnected.

FCC Approvals

The RF500 Gateway and transmitters comply with Part 15 of the FCC Rules. Operation is subject to the following four conditions:

- This device may not cause harmful interference, and
- This device must accept any interference received, including interference that may cause undesired operation.
- To reduce potential radio interference to other users, the antenna type and its gain should be so chosen that the equivalent isotropic radiated power (e.i.r.p.) is not more than that permitted for successful communication.
- Changes or modifications not expressly approved by the party responsible for compliance could void the user's authority to operate the equipment.



Transmitters must be placed greater than 20cm from the body.

Equipment Ratings

Supply Voltage

Comark will provide mains adaptors with plugs to suit your country, if the correct socket adaptor has not been provided please contact Comark for a replacement.

AC adaptors supplied for use with RF500A Gateway and transmitters have been designed for worldwide use over the following voltage and frequency ranges.

Voltage	100-240 VAC
Frequency	50/60Hz

Only use adaptors as supplied by Comark and do not attempt to use others as damage to the equipment and voiding of the CE approval may occur.

Environmental Conditions

All RF500 equipment is designed for indoor use only.

(Some outdoor installation of RF500 transmitters is permitted. Contact Comark for details)

Gateway Storage/Operating Conditions

Temperature 0°C to 40°C (32°F to 104°F)

Humidity 10-90% RH (Non-condensing)

RF51X Transmitter Operating Conditions

Temperature -30 to +70°C (-22°F to 158°F)

Humidity 10-90% (Non-condensing)

RF542 Transmitter Operating Conditions

Temperature 0 to 50°C (32°F to 122°F)

Humidity 10-90% (Non-condensing)

RF5XX Transmitter Storage Conditions

Temperature -40 to +85°C (-40°F to 185°F)

Humidity 10 to 90% RH (Non-condensing)

RF515 Maximum Input Conditions

0-1V Range 0 - 3V

0-10V Range 0 - 30V

4-20mA Range 0 - 100mA

Maintenance and Cleaning

No specific maintenance is required for the Gateway. Transmitters however will require periodic battery replacement which can be performed by the user by following the instructions on {Page 43} “Changing Lithium Battery on RF500 Series Transmitters”.

Cleaning of the Gateway should be limited to a dry lint free cloth to remove dust and debris from the airflow grills. A damp cloth may be used in the event that a more stubborn mark needs to be removed. At no time should a wet cloth or any detergent agent be used to clean the Gateway.

Service and Repair

Should service of the Gateway, transmitters or probes be required; then a “return to base” service is provided by Comark. Please contact Comark Instruments or your local distributor to make arrangements for return of any items for repair.

EC-Declaration of Conformity



Comark Instruments
52 Hurricane Way
Norwich
Norfolk.
NR6 6JB

Declare that the products:

**Comark Wireless Monitoring System Comprising Part Numbers:
RF500A, RF500AP, RF512, RF513, RF515, RF516, RF520 & RF542**

Is in conformity with the requirements of the following documents (Directives):

Radio & Telecommunications Terminal Equipment Directive (R&TTE) 1999/5/EC
Electromagnetic Compatibility Directive 2004/108/EC.
The Low Voltage Directive (2006/95/EC) Annex-1

Standards:

EN 61010-1:2010 Safety requirements for electrical equipment for measurement, control and laboratory
ETSI EN 301 489-17 V2.1.1 (2009-05) Specific conditions for 2.4 GHz wideband transmission systems and 5 GHz
high performance RLAN equipment

David Goulden
Development Manager
Comark Instruments

A handwritten signature in black ink, appearing to read 'David Goulden', is located to the right of the printed name and title.

Transmitter Fault Codes

Under certain conditions the transmitter display can show a status code or fault code. These codes can help in diagnosing the reason a transmitter may fail to transmit data to the Gateway. Status codes indicate problems that can be resolved by the user. Fault codes indicate more serious problems that generally require that the transmitter be returned for service.

This is not an exhaustive list of fault codes; only the most common will be described here.

Code	Meaning	Resolution
004	Fault with Radio / Ethernet Module	Try removing the battery then replacing it. Otherwise return for service
1000	Battery is Dead	Replace the battery
100	Date and time lost	Wait for the transmitter to receive correct date and time from the Gateway
400	Invalid Programmed Task	Program a new task from the Gateway
500	Codes 100 & 400 combined	Resolve Code 100 & Code 400 individually

Gateway Fault Conditions

Under certain conditions the Gateway Fault LED can flash to indicate an error. The possible faults which can cause the Fault LED to flash are:

- Overheating
- Battery Pack fault
- Clock error
- PSU fault
- Software errors
- Radio Module fault

Appendix A – Gateway Connection via RJ45 Cross-Over Ethernet Cable

1. Set up your computer temporarily with a fixed IP address using the instructions given in Appendix B - Setting a Fixed IP Address.
2. Connect the cross-over Ethernet cable between computer and RJ45 jack on the Gateway.
3. Configure the RF500A Gateway as in Gateway Commissioning. {Page 17}
4. Remove the cross-over Ethernet cable after the Gateway has reset. (See Gateway Reset {Page 11})
5. Using Appendix B - Setting a Fixed IP Address as a guide, restore the computer network settings back to as existed previously.
6. Connect both the PC and RF500 Gateway to the LAN using regular Ethernet patch leads.
7. Verify that a connection can be made to the Gateway by following the steps in “Viewing the Gateway Login Page” {Page 19} but using the newly configured IP Address instead of 192.168.25.220.

Appendix B - Setting a Fixed IP Address

The following instructions detail the Windows 98, ME, 2000 and XP procedure for setting a computer to a fixed IP address.

1. Go to the Windows control panel and double-click the Network icon or the Network Connections icon.
2. Right-click on the “Local Area Connection” and select Properties
3. In the General Tab select the “Internet Protocol TCP/IP” item and click on the **properties** button.

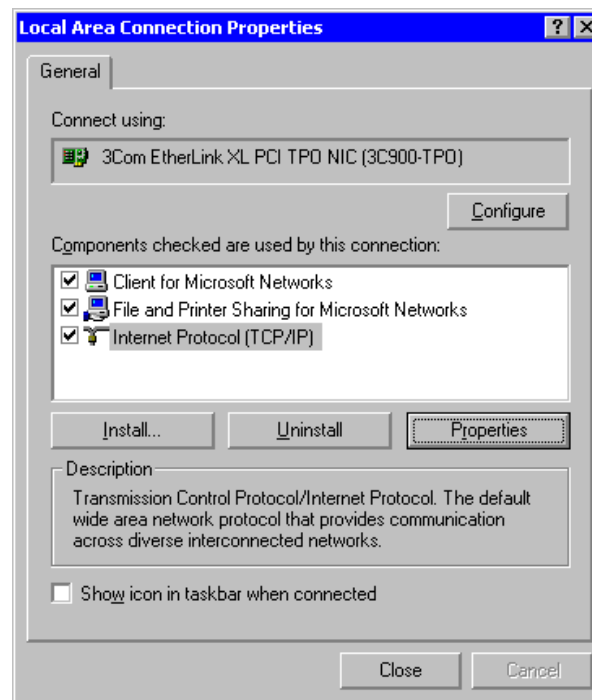
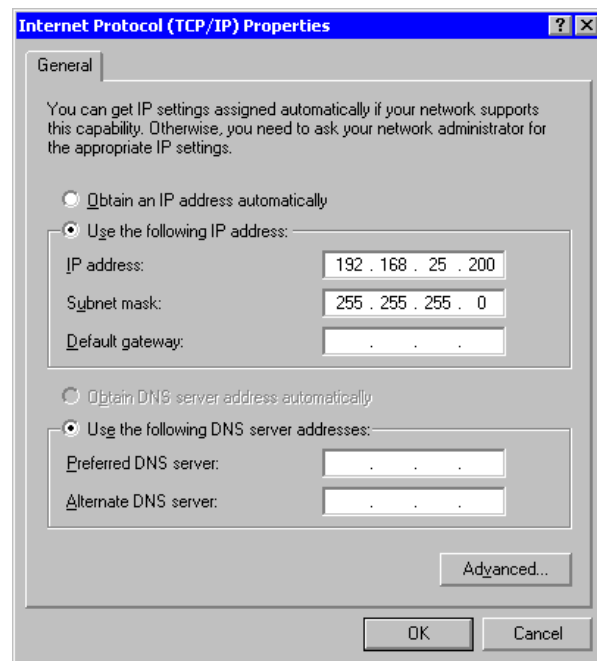


Figure 22 - Local Area Connection Properties

- Record the original settings so that they can be restored after RF500 configuration.
- Select the **Use the following IP address** button.
- Enter the following IP address: 192.168.25.200.
- Enter the following subnet mask: 255.255.255.0 then click OK.

The Computer is now setup to use a fixed IP address.



Definitions of Gateway Terminology

Avg – This is the average reading recorded in the Period being displayed. On the Home Page this is the average reading over the period of time from midnight to the timestamp of the latest reading received. In the summary pages the average reading could be over a much longer period of time.

Backbone – A transmitter during setup can be designated to be part of the Wireless Network Backbone. This requirement is identified during site surveys. A Backbone transmitter will be mains powered and constantly active. It will therefore (almost) always be available to re-transmit messages received from nearby transmitters.

Event Logging – All transmitters have the capacity to measure from one or more sensor inputs at a number of pre-defined logging intervals. However should an alarm event occur between log intervals then the transmitters will wake up to record this event. As soon as the alarm is triggered, the transmitter will wake up and transmit the alarm back to the Gateway via the mesh network. This technique allows for long intervals between logging static readings knowing that if an alarm does occur it will be captured. This results in a robust system that will log an extra reading when there is an event to record.

Gateway Name – A customer selectable name for each Gateway enables easy identification.

Last – This is the last known good reading from the transmitter. It does not imply that the transmitter is functional or currently within range.

Location – A logical grouping of transmitters for the purpose of filtering and directing alerts. These Locations may correspond to the physical siting of transmitters but more usually group transmitters monitoring equipment or environments “owned” by an individual person or department.

Login Page – A user name and password are required in separate pages to log in to the Gateway to perform any setup changes or maintenance.

Max – This is the maximum reading recorded in the Period being displayed. On the Home Page this is the maximum reading over the period of time from midnight to the timestamp of the latest reading received. In the summary pages the maximum reading could be over a much longer period of time.

Min – This is the minimum reading recorded in the Period being displayed. On the Home Page this is the minimum reading over the period of time from midnight to the timestamp of the latest reading received. In the summary pages the minimum reading could be over a much longer period of time.

Mesh Network – The technology used in the RF500 system to increase wireless reception reliability. Transmitters are setup to be either part of a Backbone or to be a regular transmitter. Those designated as part of the Backbone remain in RF contact with each other. By doing this the system is able to dynamically adapt to changing conditions automatically ensuring the integrity of the system at all times.

No Signal – The Gateway has not received any signal from a transmitter for a long time. Usually 1 hour or 5 times the radio-rate whichever is longest.

Period – A continuous session of logged records. Any break in monitoring will result in the creation of a new logging Period.

PST – Precision Semiconductor Technology or Thermistor, a sensor for measuring temperature.

Radio-Rate – The rate at which a transmitter enables its radio to contact the Gateway. The default is once every 15 minutes.

Restricted User – A user of RF500 who can only perform a selection of functions.

Self-Healing – As part of the Mesh technology the system is able to adapt automatically if one part of the system is damaged, i.e. Radio Contact is lost with part of the Backbone. Only regular transmitters directly reliant on the faulty part of the system will be affected with the rest of the transmitters simply finding alternative routes for the data.

Task – The name given to the collection of logging parameters for a specific monitoring job. Tasking is the action of entering these parameters into RF500 and sending them to the transmitter.

TextMagic™ – Internet SMS provider (www.textmagic.com). Warning emails sent from the Gateway can be converted to SMS messages using this service. Other service providers may also work but only TextMagic has been tested.

Transmitter – A transmitter is a device connected wirelessly to the system. This device records data locally from a number of sensors and sends the information back to the Gateway using RF. A transmitter is powered via battery or AC adaptor.

Glossary

21 CFR – The FDA (Food and Drug Administration) in the USA, issued regulations Title 21 CFR (Code of Federal Regulations) Part 11 that provide criteria for acceptance by FDA or an approved regulatory body, for the acceptance of electronic records, electronic signatures, and handwritten signatures executed to electronic records as equivalent to paper records and handwritten signatures executed on paper. These regulations, which apply to all FDA program areas, are intended to permit the widest possible use of electronic technology, compatible with the FDA's responsibility to promote and protect public health. Part 11 applies to any record governed by an existing FDA predicate rule that is created, modified, maintained, archived, retrieved, or transmitted using computers and/or saved on durable storage media. In other words any record from a data logger for instance that is at some stage stored on a PC or where a PC is used to retrieve the data, 21 CFR Part 11 can be applied. The RF500 system is designed to aid compliance with 21 CFR Part 11.

Administrator – An Administrator is a user who has unrestricted access to all Gateway functions.

Antenna – Electrical device for collecting or disseminating RF energy. The interface between a radio transmitter or receiver and transmission medium (air).

Autodialler – A device when triggered (by Gateway alarm for example) to dial a specific telephone number to playback a pre-recorded alarm message.

Ethernet/Network/LAN – Terms used to describe the connection of the Gateway to various users with access to the system. Personal Computers are connected together using a network via Ethernet ports combining to make a Local Area Network.

FCC – Federal Communications Commission.

Firmware – The software program operating the various components of RF500 e.g. Transmitter, RF module and RF500 Gateway.

Frequency – Number of oscillation cycles-per-second of a radio signal.

IE – Microsoft Internet Explorer.

IP address – Internet Protocol address. Unique identifier for each device connected to a network.

ISP – Internet Service Provider.

Licence free – Term used to describe the frequency band in which the system operates in terms of licence to broadcast. RF500 uses the licence free Industrial, Scientific and Medical (ISM) band of 2.4GHz where operators and users are not required to purchase any kind of licence in order to use the product.

Password – A password is a string of characters that is used for user authentication. The password is personal and should be kept secret.

Pt100 – Platinum Resistance Device for measuring temperature.

RF – An abbreviation of the words Radio Frequency. Commonly used to describe “wireless radio communication”.

RH – Relative Humidity. The amount of water vapour present in the atmosphere expressed as a percentage of the maximum that could be present at the same temperature.

Users – A user is anyone who is able to log onto an IT system such as RF500.

Comark Instruments
52 Hurricane Way
Norwich, Norfolk
NR6 6JB United Kingdom
Tel: +44 844 815 6599
Fax: +44 844 815 6598
Email: sales@comarkinstruments.com
Website: www.comarkinstruments.com

Comark Instruments
PO Box 500
Beaverton
OR 97077 USA
Tel: 503 643 5204
Fax: 503 644 5859
Email: sales@comarkusa.com
Website: www.comarkusa.com