



Dial Indicator, Lug Back, AGD/ANSI
0,05", 0,0001", Jew. Bearing, Shockproof
Item number: 2923S-10



Description

Standard Type, Various Ranges, 0,0001" Graduation - Inch

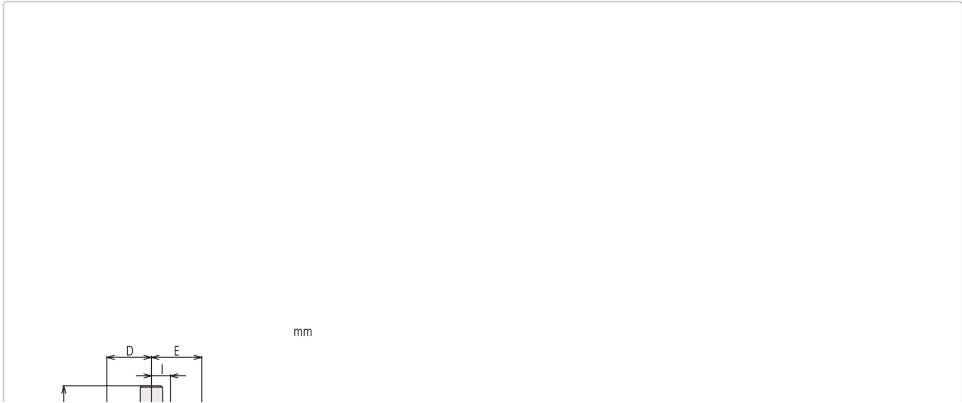
This is a standard, inch dial indicator. It offers you the following benefits:

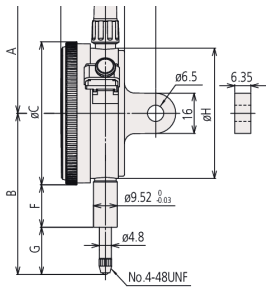
- Bezel clamp and lifting lever (optional) can be attached to either right or left side. They can be easily installed and removed without tools.
- No through screw holes on the frame and secure adhesion between the bezel and the crystal as well as the use of an O-ring prevents water or oil penetration.

Specification

Range:	0,05" Inch
Accuracy:	±0,0002"
Range per rev.:	0.01"
Mass:	164 g
Scale:	0-5-0
C:	57 mm
D:	17.7 mm
Mass lug/plain:	164/139 g
E:	19 mm
F:	13.6 mm
G:	9.6 mm
I:	7.6 mm
Error of indication one revolution:	±0,0002"
Stem:	9.52 mm / 0.375"
Contact point:	Carbide tipped, thread: 4-48UNF
Delivered:	with certificate of inspection, limit indicators
Digital/Analog:	Analog
Inch-Metric:	Inch
Type:	ANSI/AGD Standard

Dimensions





Spare parts

Consumable spares:



Contact Element Ball Point
1/4" Length, Carbide, Inch
21BZB005