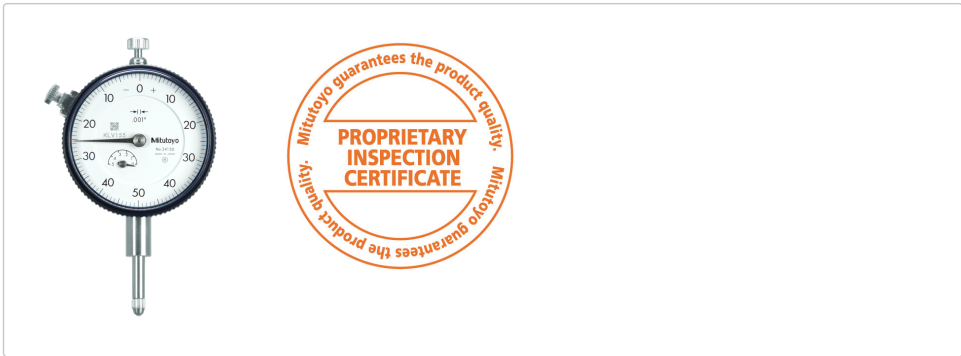




Dial Indicator, Lug Back, AGD/ANSI
0,5", 0,001"
Item number: 2415S



Description

Standard Type, 0,5" / 0,125" Range, 0,001" / 0,005" Graduation - Inch

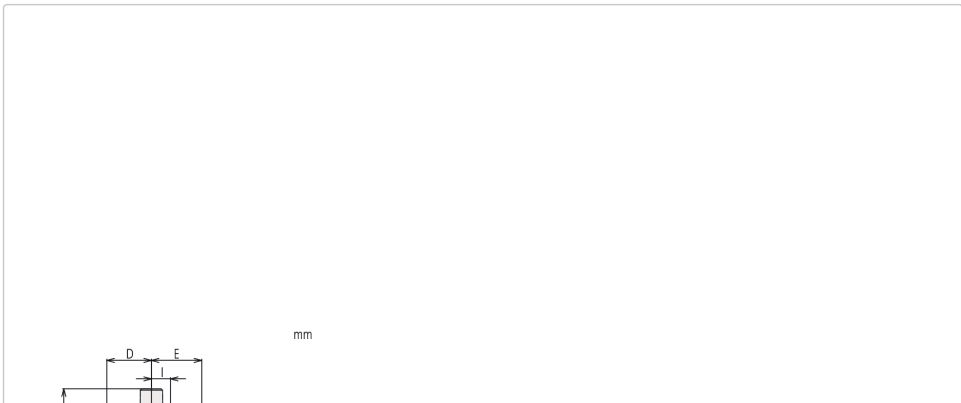
This is a standard, inch dial indicator. It offers you the following benefits:

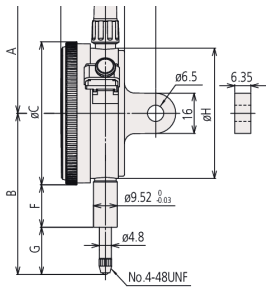
- Bezel clamp and lifting lever (optional) can be attached to either right or left side. They can be easily installed and removed without tools.
- No through screw holes on the frame and secure adhesion between the bezel and the crystal as well as the use of an O-ring prevents water or oil penetration.

Specification

Range:	0,5" Inch
Accuracy:	±0,001"
Range per rev.:	0.1"
Mass:	164 g
Scale:	0-50-0
C:	57 mm
D:	17.7 mm
Mass lug/plain:	164/139 g
E:	19 mm
F:	13.6 mm
G:	22 mm
I:	7.6 mm
Error of indication one revolution:	±0,001"
Stem:	9.52 mm / 0.375"
Contact point:	Carbide tipped, thread: 4-48UNF
Delivered:	with certificate of inspection, limit indicators
Digital/Analog:	Analog
Inch-Metric:	Inch
Type:	ANSI/AGD Standard

Dimensions





Spare parts

Consumable spares:



Contact Element Ball Point
1/4" Length, Carbide, Inch
21BZB005



Point (Imp.)/2000
21BZB118