



Dial Indicator, Lug Back, AGD/ANSI
0,5", 0,0001", Jeweled Bearing
Item number: 2358S-10



Description

Standard Type, Various Ranges, 0,0001" Graduation - Inch

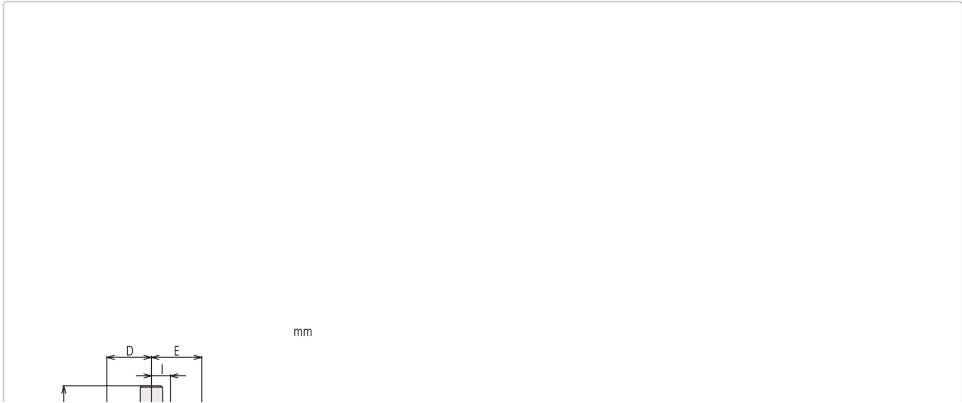
This is a standard, inch dial indicator. It offers you the following benefits:

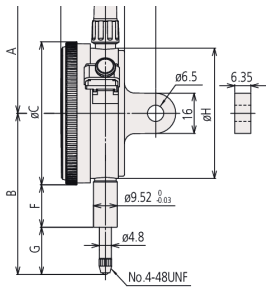
- Bezel clamp and lifting lever (optional) can be attached to either right or left side. They can be easily installed and removed without tools.
- No through screw holes on the frame and secure adhesion between the bezel and the crystal as well as the use of an O-ring prevents water or oil penetration.

Specification

| | |
|-------------------------------------|--|
| Range: | 0,5" Inch |
| Accuracy: | ±0,0002" |
| Range per rev.: | 0.01" |
| Mass: | 164 g |
| Scale: | 0-10 |
| C: | 57 mm |
| D: | 17.7 mm |
| Mass lug/plain: | 164/139 g |
| E: | 19 mm |
| F: | 13.6 mm |
| G: | 21.5 mm |
| I: | 7.6 mm |
| Error of indication one revolution: | ±0,0002" |
| Stem: | 9.52 mm / 0.375" |
| Contact point: | Carbide tipped, thread: 4-48UNF |
| Delivered: | with certificate of inspection, limit indicators |
| Digital/Analog: | Analog |
| Inch-Metric: | Inch |
| Type: | ANSI/AGD Standard |

Dimensions





Spare parts

Consumable spares:



Contact Element Ball Point
1/4" Length, Carbide, Inch
21BZB005