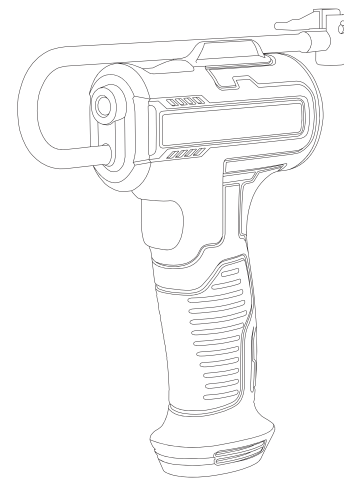


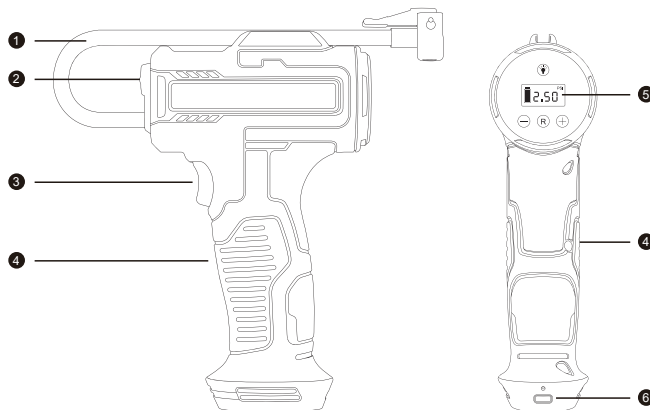
Tyre Inflator

USER MANUAL



Please read this manual prior to using this product

Product Description



- 1 Air hose
- 2 LED lamp
- 3 On/Off Switch
- 4 Handle
- 5 Pressure Gauge
- 6 Charging interface

ACCESSORIES



USB charging cord

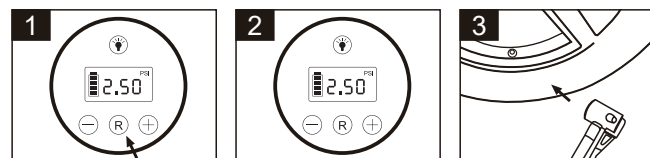


Multifunctional Gas Nozzles

Product Parameter

Model No	Analog version	Digital screen version
Cylinder Diameter	17mm	19mm
Power	50W	60W
Rated voltage	7.4V	7.4V

How to inflate



Long press "R" button to wake up the screen

Pre-set the pressure

Connect the gas tube to the valve of tire



Press the On/Off switch

The machine will stop inflating as soon as the tire pressure reach the pre-set pressure. Then turn off the switch



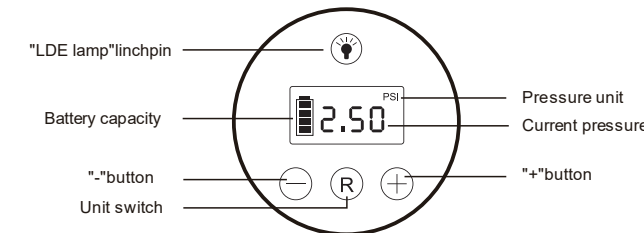
Warning

- Do not use it in direct sunlight or under high temperature or pressure.
- Please make sure the switch is off before charging. It is forbidden to charge while using.

Preset pressure

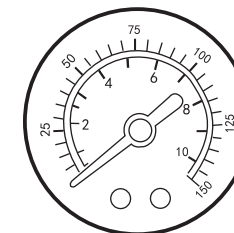
Digital screen version

Press "R" to change the unit, press "+" or "-" to choose the figures. After the figures stop flickering, turn on the switch to start work. The machine will stop automatically once the tire pressure reaches the pre-set pressure. Turn off the switch after complete inflating.



Analog version

Open the inflatable switch to confirm that the gas nozzle is connected without air leakage. In the process of inflating, please watch the pressure gauge at any time. When it reaches the normal pressure of the car, stop inflating the inflatable nozzle in time to complete the inflating.



Machanical watch

Tyre pressure recommended for private cars



CAR

2.3-2.5KG/CM²



SUV

2.5KG/CM²

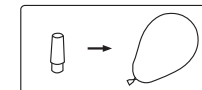
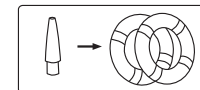
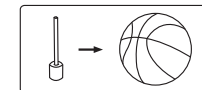


MPV

2.3-2.5KG/CM²

Multifunctional Gas Nozzles

This product has three multifunctional gas nozzles as below.



Features

- Hand-held air pump, more convenient operation
- Three operation buttons, accurate pressure display
- Metal cylinder, fast heat dissipation, long service life
- Shorter inflation time, lower noise
- LED lamp bring convenient use at night
- Preset pressure, stop automatically

Attention

- Make sure the battery is fully charged before using.
- Please lock the safety buckle when the product is not in use to avoid startup.
- Do not disassemble, repair or modify this product without authorization.
- Do Not put it beside heat sources, such as car heat rejection outlet.
- The normal operation of the product will make the product slightly heating, which is a normal phenomenon.
- In order to ensure the good work of the air pump, the continuous inflating time should not be too long. It needs to interval rest if long time inflation is required.
- Please charge the product in time after using up the power. If it is not charged for a long time, the product maybe can't be charged.
- It will turn off automatically if no operation for 40 seconds.