

# PATGuard 3

## The Health and Safety Edition

The ultimate in total health and safety management.

PATGuard 3 is an easy-to-use software program which enables you to record, store and report on a range of health and safety requirements including PAT testing, risk assessments and other workplace test and inspections. Tag records with images as visual evidence, schedule retest periods and produce professional reports and certificates for total traceability.

PATGuard 3 The Health and Safety Edition is compatible with a wide range of portable appliance testers, including Seaward's Apollo 600 safety management tool. A manual data entry version of the program is also available.



### Key Features

- Intuitive user interface for efficiency and ease-of-use
- Tag photos to sites, locations, asset IDs and test results
- Download compatible with a wide variety of PAT testers
- Electrical risk assessment tool quickly determines risk-based retest periods for electrical appliances
- Universal risk assessment tool calculates risk score for any workplace hazard
- Extensive range of detailed and summary reports
- Test and inspection reports for fire detection/alarm systems and emergency lighting
- Auto-scheduler function notifies the user when assets are due for retest
- Create a professional viewer CD for read only access to test records
- Generate professional invoices
- Create customisable exports of test records in CSV format

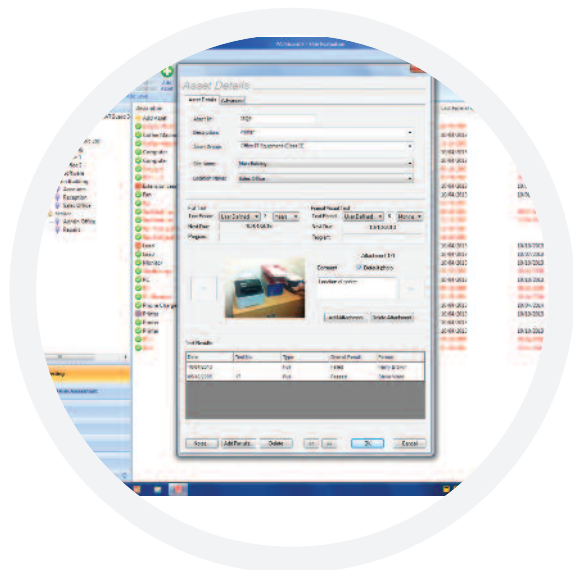
### PATGuard 3 Users

- Dutyholders
- In-house PAT testers
- Health and Safety Managers
- Health & Safety Contractors
- Professional PAT Testers
- Electrical Contractors
- Facilities Managers
- Risk Assessment Professionals
- Operations Managers



[www.seaward.co.uk/pg3trial](http://www.seaward.co.uk/pg3trial)

**Tel:** +44 (0) 191 587 8744  
**Email:** [sales@seaward.co.uk](mailto:sales@seaward.co.uk)



### ► Comprehensive PAT Records

PATGuard 3 The Health and Safety Edition offers total traceability when it comes to maintaining portable appliance testing records, enabling images taken with Apollo 600 or any camera or phone to be tagged against sites, locations, asset IDs and test results – providing evidence of visual inspection.

Tagged images can be included in the vast range of reports that PATGuard 3 The Health and Safety Edition can create. These are easily stored, printed or emailed.

### ► A Risk-Based Approach

Universal and electrical risk assessment tools are built into PATGuard 3 The Health and Safety Edition. The electrical risk assessment tool can be used to ensure a risk-based approach is taken to portable appliance testing; automatically determining retest periods for assets proportionate to risk, as required by the IET Code of Practice.

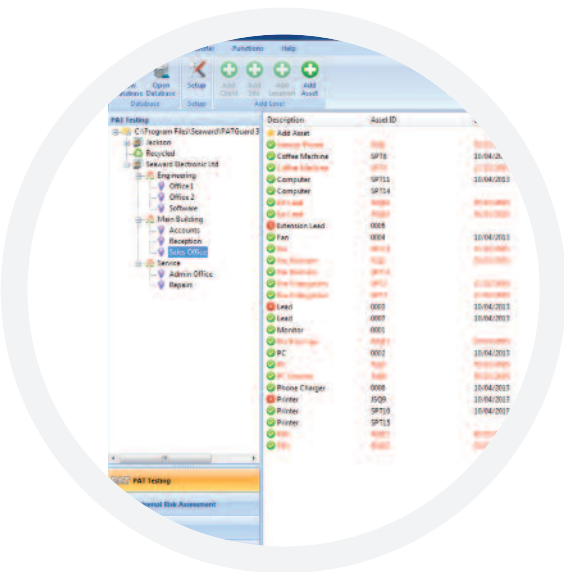
The universal risk assessment tool means recording details of any workplace hazard, calculating risk scores and scheduling corrective actions has never been simpler.



### ► Complete Health and Safety Management

A range of additional health and safety test and inspection certificates are built into PATGuard 3, allowing records for the inspection of emergency lighting and fire alarm systems to be kept and easily managed.

The software program is upgradeable to include more health and safety reports and certificates as updates are released.



## ► Simple Asset Management

PATGuard 3 The Health and Safety Edition features a simple checkbox system which helps to keep track of assets which are in service. It is also easy to keep asset repair and maintenance records, including any associated costs where applicable.

The ability to tag images next to asset records has an added benefit of aiding quick and easy identification of appliances and equipment to make life simpler when it comes to retesting.

## ► Compatible with Apollo 600

PATGuard 3 The Health and Safety Edition is the ultimate companion for Apollo 600, a total safety management tool. When used with Apollo 600 it is simple to upload and download reports, images, test results and risk assessments to and from the tester via Bluetooth or USB connectivity.

As well as being compatible with all Seaward PAT testers, PATGuard 3 is also suited for use with a range of other manufacturer's testers with download capability.



## ► Versions Available

### **PATGuard 3 Elite** - The Health and Safety Edition

The premier PATGuard 3 Health and Safety software program, featuring all of the functionality detailed\*, including compatibility with many testers with download capability.

### **PATGuard 3 Elements** - The Health and Safety Edition

A manual data entry version of PATGuard 3 The Health and Safety edition, featuring all of the same functions\* as the Elite version but for use with any tester which does not have download capability.

### **PATGuard 3 Lite**

A basic downloader version of PATGuard 3 enabling external engineers to download test results from their tester and create a file to email back to the office. This version does not include the risk assessment or reporting functionality of the Elite and Elements Health and Safety Editions but will download this information from Apollo 600.

Each available to buy online for a 1, 3 or 5 year licence period.

Download a free trial from [www.seaward.co.uk/pg3trial](http://www.seaward.co.uk/pg3trial)

\*Some features will be made available in future free updates to registered PATGuard 3 subscribers. Please check product version specification on the Seaward website before purchase.

## Feature Comparison Chart

Feature:	PATGuard 3 Elite – The Health & Safety Edition	PATGuard 3 Elements – The Health & Safety Edition	PATGuard 3 Lite – Remote Downloader
■ Rapid manual data entry	✓	✓	
■ Legacy database import from older versions of PATGuard	✓	✓	
■ Download compatible with a wide range of testers	✓		✓
■ Download photos from Apollo 600	✓		✓
■ Download risk assessment data from Apollo 600	✓		✓
■ Download completed health & safety certificates from Apollo 600	✓		✓
■ Preview and correct downloaded test results before processing	✓		✓
■ Built in universal risk assessment tool	✓	✓	
■ Determine retest periods using electrical risk assessment tool	✓	✓	
■ Upload tester configuration data to Seaward PATs	✓		
■ Upload assets for retest to Seaward PATs	✓		
■ Tag photos to sites, locations, asset IDs and test results	✓	✓	
■ Automatic re-test scheduling	✓	✓	
■ Create a read-only file of test records for clients	✓		
■ Includes a comprehensive range of test report certificates	✓	✓	
■ Printable test certificates for each asset	✓	✓	✓
■ Set-up wizard	✓	✓	✓
■ In-service indicator and report to keep track of assets	✓	✓	
■ On Hire Indicator and report	✓	✓	
■ Full test history per asset record	✓	✓	
■ Repair logging	✓	✓	
■ Invoice generator	✓	✓	
■ Create and print a range of health & safety certificates	✓	✓	
■ CSV import to enable compatibility with existing software and systems (template file included)	✓		
■ Custom CSV output (including test results)	✓	✓	
■ Customisable asset view	✓	✓	✓
■ Database compatible across PATGuard range	✓	✓	✓
■ Network enabled	✓		
■ Certificate of Testing	✓	✓	
■ Electrical Test Summary Report	✓	✓	

### System Requirements

- IBM Compatible PC
- Processor Speed 500Mhz or higher
- Microsoft Windows XP/Vista/7/8
- 512Mb RAM
- 50Mb available hard disk space
- Colour monitor with 32 bit colour or greater video card
- Internet connection or CD ROM drive
- Internet Explorer 8 or later

### Related training courses

Seaward offer a variety of PAT testing courses, including a PATGuard 3 software training course.

To see the most up-to-date offering, go to:

**[www.seaward.co.uk/training](http://www.seaward.co.uk/training)**

\*Some features will be made available in future free updates to registered PATGuard 3 subscribers. Please check product version specification on the Seaward website before purchase.

Rev 1.2